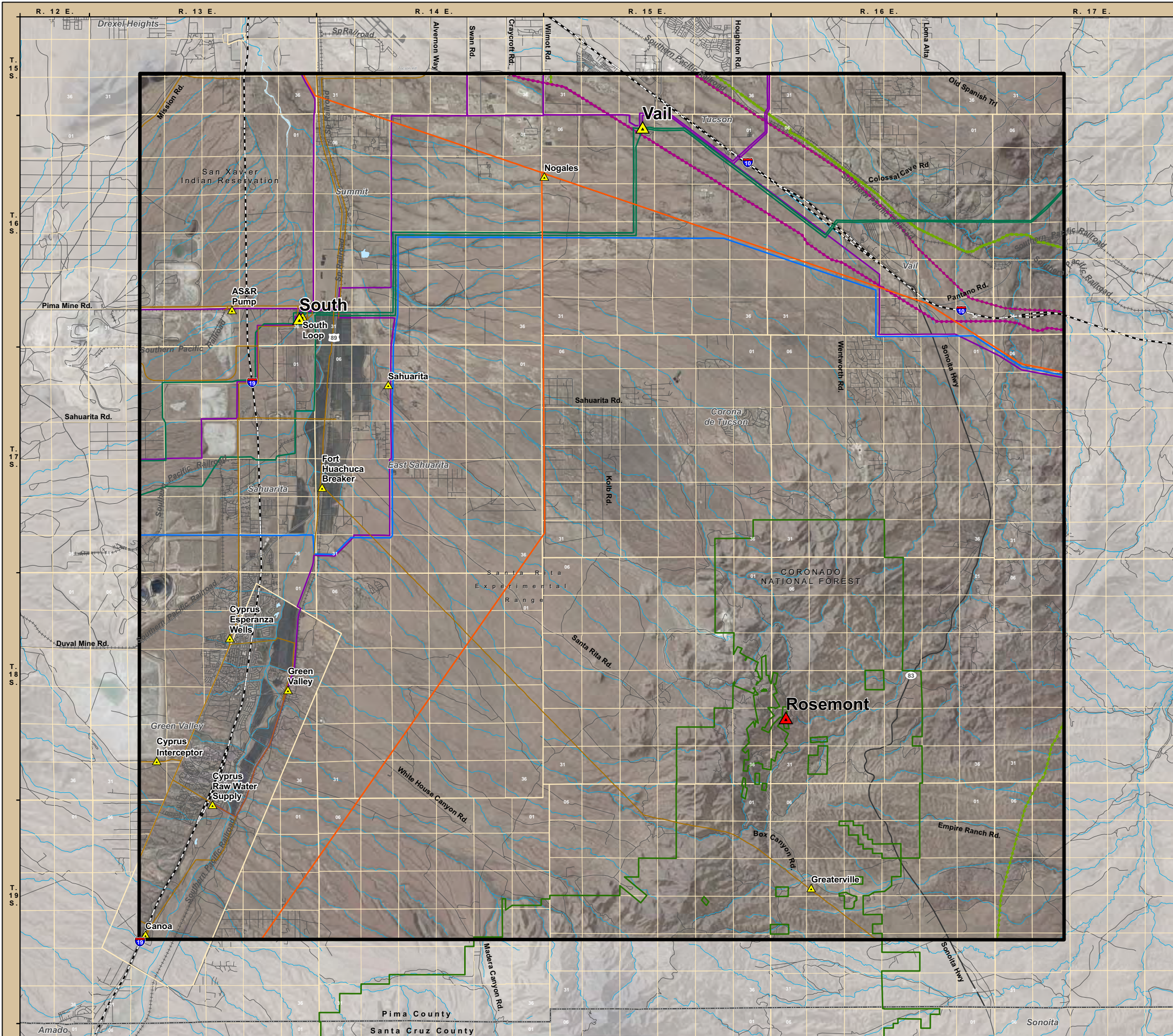




DRAFT

Rosemont 138-kV Transmission Line Project Aerial Imagery



General Reference Features

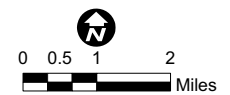
- | | | | |
|--|-----------------------------------|--|---------------------|
| | Existing Substation | | Study Area Boundary |
| | Proposed Rosemont Substation | | County Boundary |
| | Existing 345-kV Transmission Line | | Interstate |
| | Existing 230-kV Transmission Line | | Highway |
| | Existing 138-kV Transmission Line | | Secondary Road |
| | Existing 115-kV Transmission Line | | Railroad |
| | Existing 46-kV Transmission Line | | Lake |
| | Pipeline (12" or greater) | | River / Wash |
| | Pipeline (Less than 12") | | Township Boundary |
| | National Forest Boundary | | Section Boundary |

Project Location



Sources

StreetMap USA 2008; TEP 2008; EPG, 2008; USA Prime Imagery, 2008



Working Draft
March 20, 2009



N:\projects\Rosemont Copper\TEP_Logos\mxd\PMC_Base_Hatched_92.mxd