



DRAFT

Rosemont 138kV Transmission Line Project Preliminary Route Alternatives

Legend

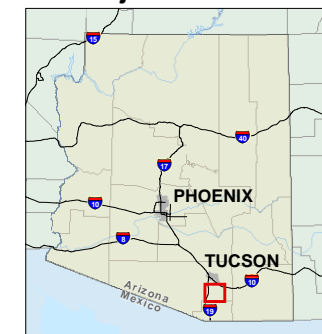
North Route Family - Option #10
Helvetia construction power via links 105, 155 option

- Permanent Link (20, 25, 55, 85, 90, 95, 140)
- Temporary Link (120, 105, 155)
- Link Identification Number
- Link Node
- Preliminary Alternative Link
- Temporary Interconnection

General Reference Features

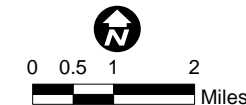
- Existing Substation
- Proposed Switchyard/Substation
- Existing 345kV Transmission Line
- Existing 230kV Transmission Line
- Existing 138kV Transmission Line
- Existing 115kV Transmission Line
- Existing 46kV Transmission Line
- National Forest Boundary
- Updated Project Study Area Boundary
- County Boundary
- Interstate
- Highway
- Secondary Road
- Railroad
- River / Wash
- Township Boundary

Project Location

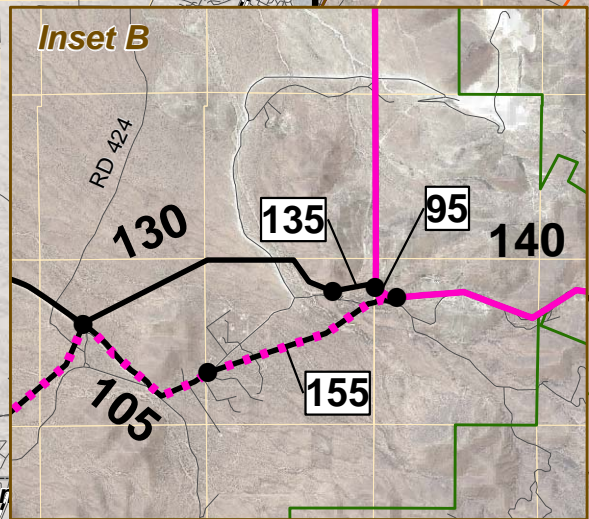
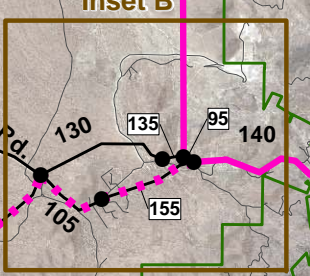
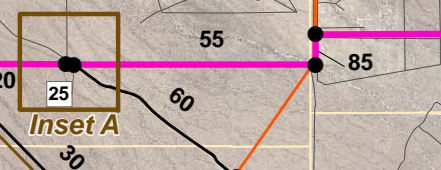
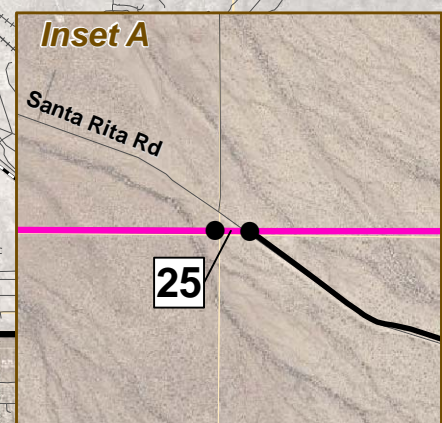
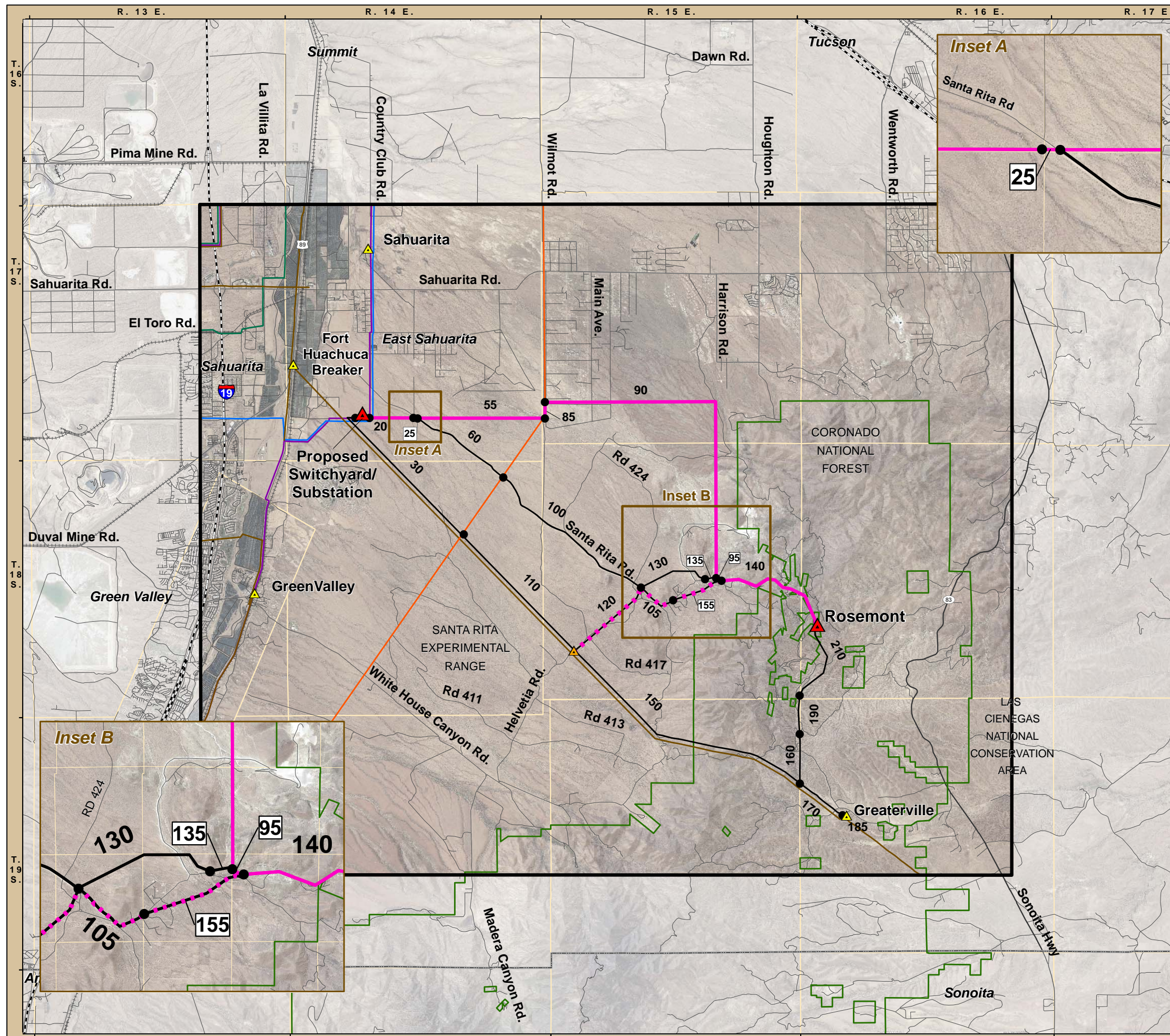


Sources

StreetMap USA 2008; TEP 2008; EPG, 2008, Pima County 2008, Rosemont Copper Company 2008



March 25, 2010



N:\projects\Rosemont Copper\TEP_Lopez\mxd\RM_C_Base_Hillshade_Insets_display.mxd