



DRAFT

# Rosemont 138kV Transmission Line Project Alternative 2

## Legend

- Operation Power (30, 110, 120, 105, 155, 140)
- Construction Power Interconnection

- Link Identification Number
- Link Node
- Preliminary Alternative Link

## General Reference Features

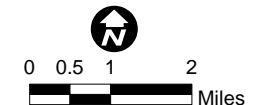
- Existing Substation
- Proposed Switchyard/Substation
- Existing 345kV Transmission Line
- Existing 230kV Transmission Line
- Existing 138kV Transmission Line
- Existing 115kV Transmission Line
- Existing 46kV Transmission Line
- National Forest Boundary
- Updated Project Study Area Boundary
- County Boundary
- Interstate
- Highway
- Secondary Road
- Railroad
- River / Wash
- Township Boundary

## Project Location



## Sources

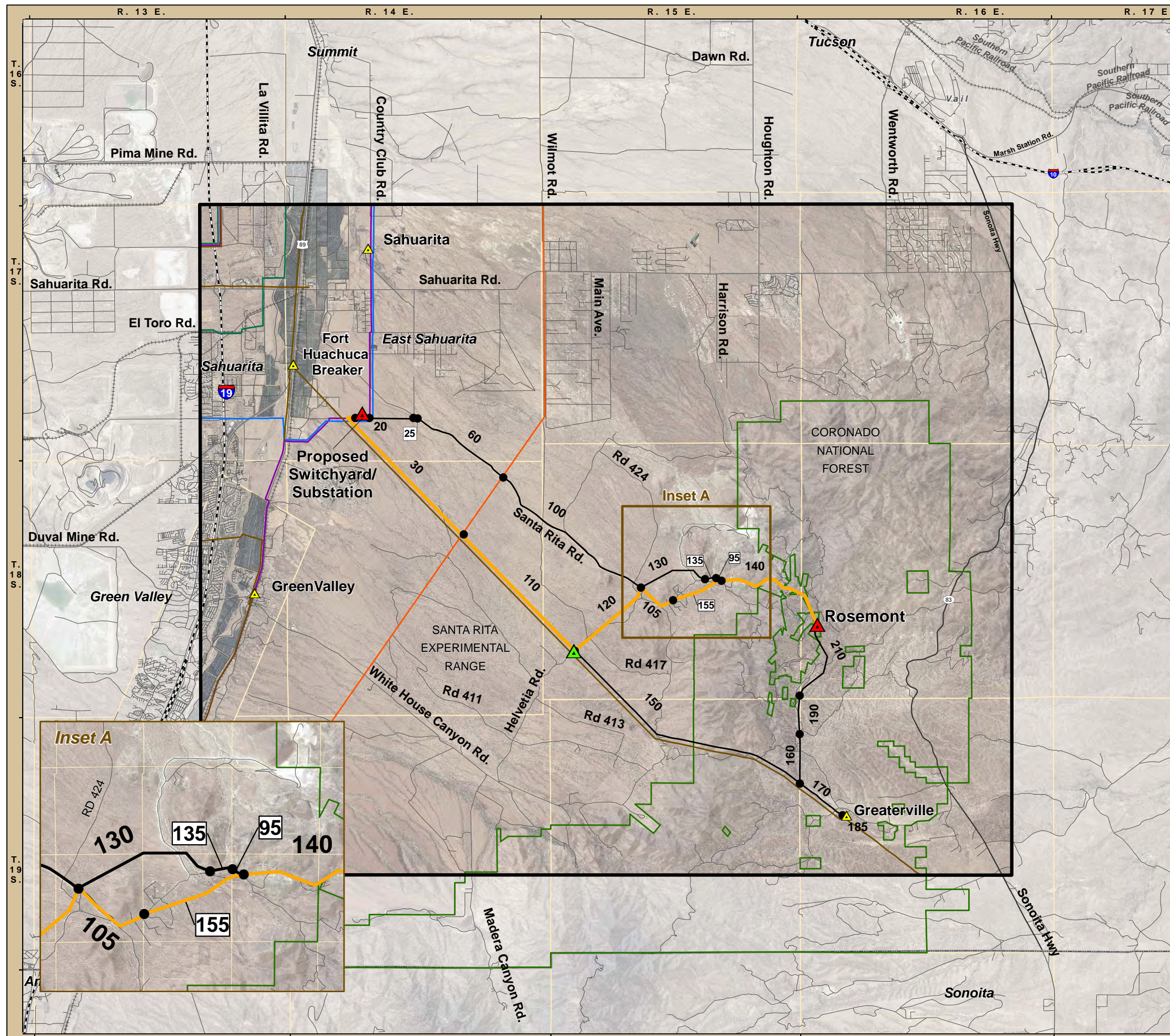
StreetMap USA 2008; TEP 2008; EPG, 2008, Pima County 2008, Rosemont Copper Company 2008



November 16, 2010



N:\projects\Rosemont Copper\TEP\_Lopez\mxd\RM\_C\_Base\_Hillshade\_Insets\_display.mxd



Inset A

