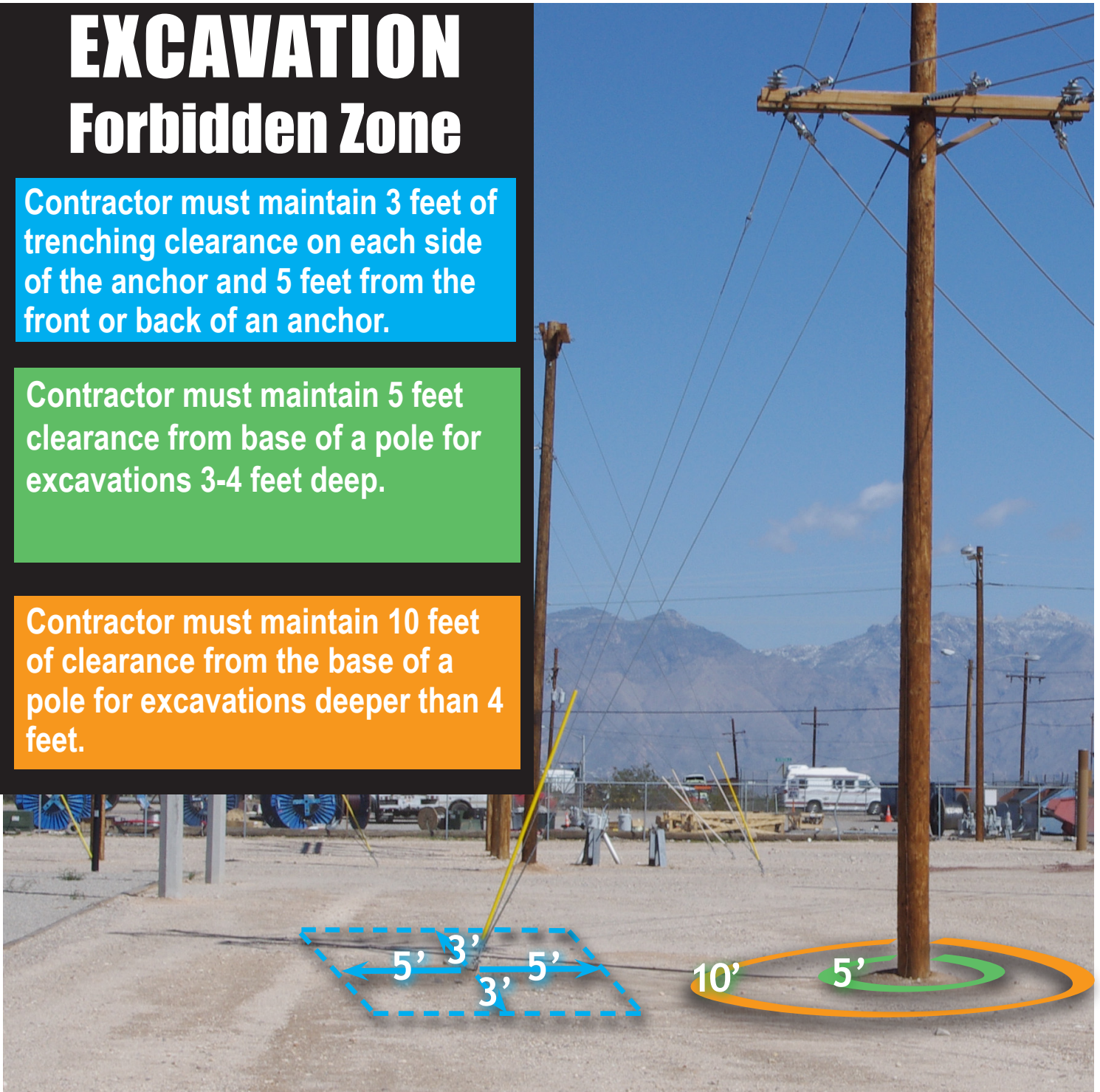


# EXCAVATION Forbidden Zone

Contractor must maintain 3 feet of trenching clearance on each side of the anchor and 5 feet from the front or back of an anchor.

Contractor must maintain 5 feet clearance from base of a pole for excavations 3-4 feet deep.

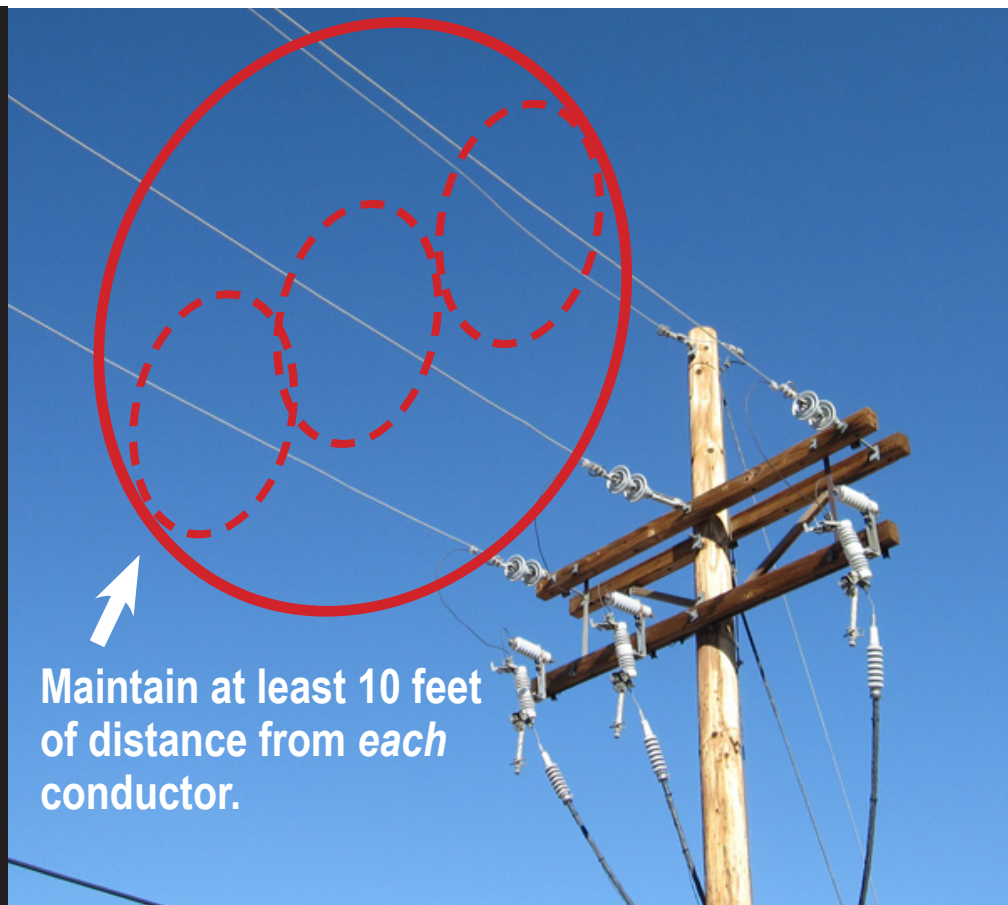
Contractor must maintain 10 feet of clearance from the base of a pole for excavations deeper than 4 feet.



# OVERHEAD Forbidden Zone

This picture shows  
a 13.8 kilovolt (kV)  
line.

Contractors must  
stay at least 10 feet  
away from each  
span of conductor.



Maintain at least 10 feet  
of distance from each  
conductor.