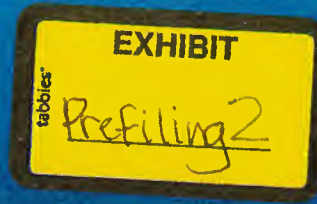


# Energy Grid Update

## Irvington-East Loop Transmission Line

May 2019



## TEP Plans New Transmission Line to Meet Growing Energy Needs, Support D-M

Tucson Electric Power (TEP) is developing plans for a new transmission line to help serve growing energy needs. The project would help Davis-Monthan Air Force Base satisfy its energy resiliency requirements and improve electric reliability for customers in Tucson.

TEP must determine a route for the Irvington-East Loop 138 kilovolt (kV) Transmission Line, which will connect the Irvington Substation to the East Loop Substation. The line also must interconnect with the planned Port and Patriot substations. TEP encourages residents, property owners and other stakeholders to share their input about potential routes and help inform the company as it refines project plans.

### STUDY AREA and PROJECT BENEFITS

In determining where to locate new energy infrastructure, TEP considers the projected energy needs of nearby residential and commercial customers, anticipated economic development, proximity to existing equipment, project costs, geography, the environment, public input and other factors. Transmission lines link substations that change the voltage of electric current for transmission and delivery of electric service to area customers.

TEP is evaluating potential transmission line routes within a defined study area that could interconnect existing and planned substations that include:

- **Irvington Substation** (terminus point): TEP is upgrading and relocating this substation to expand capacity and accommodate new generating resources currently under construction at the company's Irvington Campus, located near South Alvernon and East Irvington roads.

- **Port Substation** (planned point of interconnection): TEP plans to build this substation on a 10-acre site near

South Kolb and East Valencia roads at the Port of Tucson, an intermodal inland shipping and storage facility supporting the transportation of goods throughout the Southwest. The planned substation is designed to accommodate increased energy demands and economic growth in the area. An in-service date has not been determined.

- **Patriot Substation** (planned point of interconnection): TEP plans to build this substation on a 16-acre site near South Kolb and East Escalante roads at Davis-Monthan. The new substation will help Davis-Monthan meet Department of Defense-mandated energy resiliency directives, replace aging infrastructure that has reached the end of its useful life and strengthen electric reliability for customers in the area. The substation is scheduled to be in service in 2021.

- **East Loop Substation** (terminus point): Located near East Speedway Boulevard and South Kolb Road, this existing substation feeds multiple circuits that deliver electric service to homes and businesses throughout the area.

TEP conducted a siting analysis to identify multiple potential line route segments that it could combine in various ways to form a route. The enclosed map identifies each segment with a number. Residents and other stakeholders can use these identifying numbers to share thoughts or concerns in their comments about specific segments.

TEP also will use additional input from upcoming public open house meetings and a previous stakeholder meeting held in May to identify up to three (3) alternative transmission line routes for further consideration. Members of the community will have additional



TEP employees install upgrades at the East Loop substation. The planned transmission line would connect East Loop to new and existing substations.

opportunities to comment on these alternative routes in the future.

The Irvington-East Loop line would cross private property and government-owned land in the City of Tucson and portions of unincorporated Pima County. TEP would build the line with self-weathering steel monopoles that stand between 75-110 feet tall. Taller structures may be required at major road or line crossings.

### REQUIRED APPROVALS and TIMELINE

The Arizona Corporation Commission (ACC) must approve a Certificate of Environmental Compatibility (CEC) for the transmission line before it can be built. After TEP applies for a CEC later this year, the Arizona Power Plant and Transmission Line Siting Committee will review the application in a public process that includes opportunities for neighbors and other stakeholders to provide comments. If a CEC is granted, it will be sent to the ACC for final review and approval.

# Irvington-East Loop Transmission Line

The City of Tucson must approve a development plan and issue a special exception land use permit before construction can begin on the Patriot Substation. TEP expects to file an application for the land use permit later this year and anticipates submitting a development plan in 2020.

The City of Tucson also must approve a development plan for the Port Substation prior to construction. TEP has not determined when it will file this plan. Current zoning will accommodate substation construction.

TEP is planning to place the Irvington-East Loop transmission line into service in 2021.

## PUBLIC PARTICIPATION

To help determine the line route, TEP encourages residents, property owners and other stakeholders to share their input by:

- Mailing a letter with your comments to:  
P.O. Box 711  
ATTN: Irvington-East Loop  
Mail Stop RC131  
Tucson, AZ 85701-0711
- Sending comments to [IRV2EL@tep.com](mailto:IRV2EL@tep.com).
- Visiting [tep.com/irvington-east-loop](http://tep.com/irvington-east-loop) and filling out an online comment form.
- Calling (520) 382-4662 and leaving a voicemail message.

Please use identifying numbers in the map to identify segments described in your comments.

TEP also invites you to attend a public open house meeting where you can ask questions, submit comments and learn more about the project. TEP has scheduled two open houses.

**Tuesday, May 21 | 6-7:30 p.m.**  
Littleton Community Center  
6465 S. Craycroft Road  
Tucson, AZ 85756

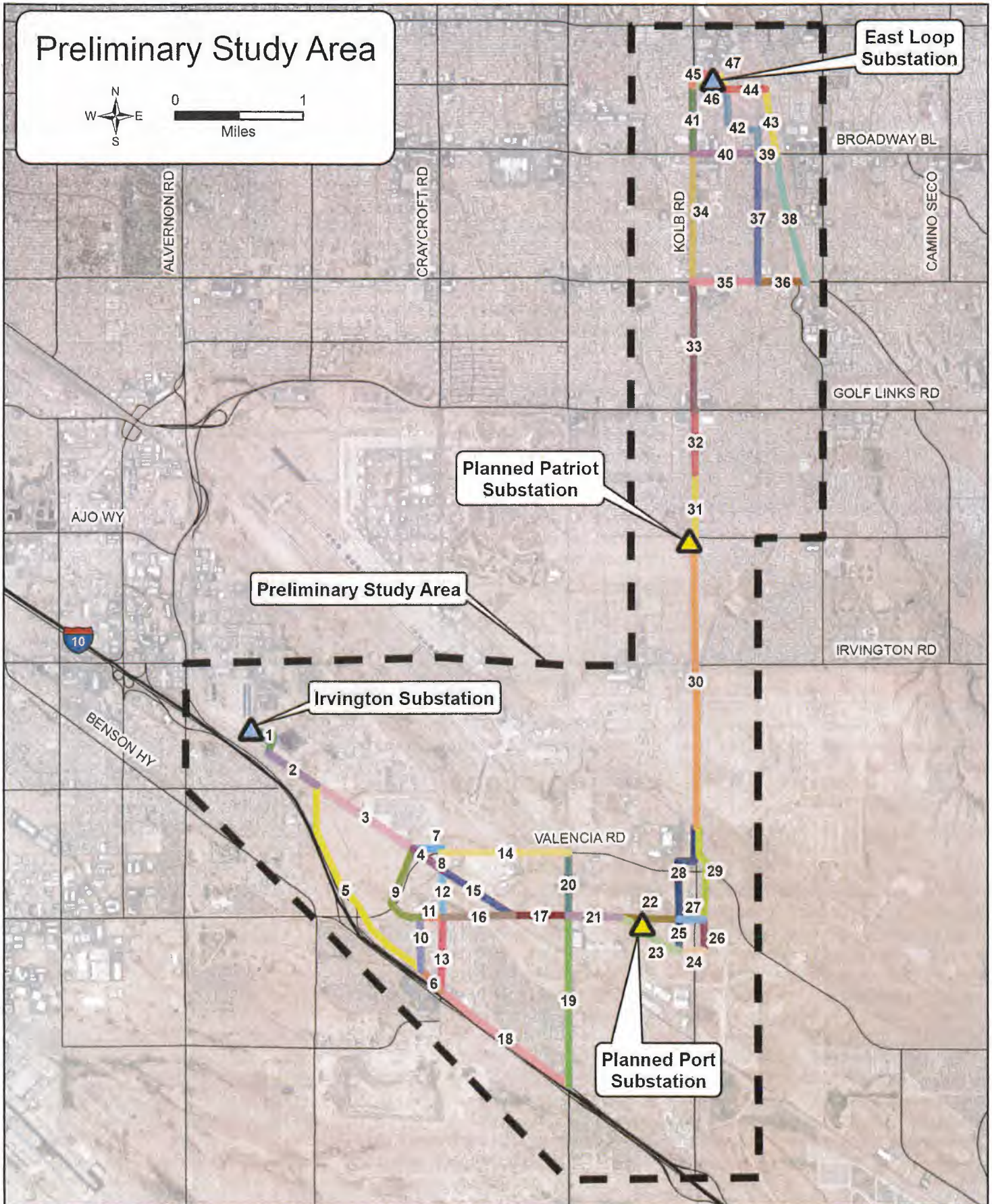
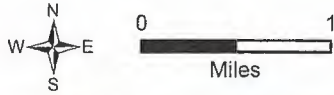
**Wednesday, May 22nd | 5:30-7 p.m.**  
Ott Family YMCA  
401 S. Prudence Road  
Tucson, AZ 85710

To view a high-resolution version of this map, visit [tep.com/irvington-east-loop](http://tep.com/irvington-east-loop).

*TEP recomienda a los residentes y propietarios a compartir sus opiniones sobre posibles rutas para líneas de transmisión. Por favor comparta sus ideas utilizando la información de contacto que se menciona arriba. También está invitado a asistir a una próxima reunión abierta al público sobre el proyecto. Si tiene alguna pregunta, comuníquese con nosotros al (520) 382-4662 o [IRV2EL@tep.com](mailto:IRV2EL@tep.com). Gracias por su interés en el proyecto.*

Number	Description
1.	On TEP's Irvington Campus
2.	Southern edge of TEP's Irvington Campus
3.	North of TEP railroad spur between TEP Irvington Campus and Craycroft
4.	North of TEP railroad spur between segment 3 and 8/12
5.	North of Interstate 10 between TEP Irvington Campus and segments 6/10
6.	North of Interstate 10 between segments 5/10 and Craycroft
7.	Either side of the railroad spur access road between Segment 3-Craycroft
8.	Either side of Craycroft between Valencia and the Union Pacific rail line
9.	Craycroft/Valencia bypass between segment 3 and segments 10/11
10.	Craycroft bypass between Littleton Road and Segments 9, 11
11.	Either side of Littleton Road between Segment 9 and Craycroft
12.	Either side of Craycroft between Union Pacific rail line and Littleton Road
13.	West side of Craycroft between Littleton Road and Interstate 10
14.	Either side of Valencia between Craycroft and Wilmot
15.	North of TEP railroad spur between Craycroft and Littleton Road
16.	Either side of Littleton Road between Craycroft and Union Pacific rail line
17.	Either side of Littleton Road between Union Pacific rail line and Wilmot
18.	North of Interstate 10 between Craycroft and Wilmot
19.	Either side of Wilmot between Interstate 10 and Littleton Road
20.	Either side of Wilmot between Littleton Road and Valencia
21.	Either side of Littleton Road between Wilmot and the Port Substation
22.	Either side of Littleton Road (old alignment) between the Port Substation and Segment 28
23.	Either side of Littleton Road (new alignment) between the Port Substation and segments 24/25
24.	Either side of Littleton Road (new alignment) between Segment 23 and Segment 26
25.	West of Kolb (outside scenic corridor) between Littleton Road's new and old alignments
26.	East of Kolb (outside scenic corridor) between Littleton Road's new and old alignments
27.	Either side of Littleton Road (old alignment) between Segment 22 and Segment 29
28.	West of Kolb (outside scenic corridor) between Littleton Road (old alignment) and Union Pacific Railroad spur
29.	East of Kolb (outside scenic corridor) between Littleton Road (old alignment) and Union Pacific Railroad spur
30.	West side of Kolb between the Union Pacific Railroad spur and Patriot Substation
31.	Either side of Kolb between Patriot Substation and Stella Road
32.	Either side of Kolb between Stella Road and Golf Links
33.	Either side of Kolb between Golf Links and 22nd
34.	Either side of Kolb between 22nd and Broadway
35.	Either side of 22nd between Kolb and Prudence Road
36.	Either side of 22nd between Prudence Road and the Pantano Wash
37.	Either side of Prudence Road between 22nd and Broadway
38.	West side of the Pantano Wash between 22nd and Broadway
39.	Either side of Broadway between Prudence Road and the Pantano Wash
40.	Either side of Broadway between Kolb and Prudence Road
41.	Either side of Kolb between Broadway and East Loop Substation access road
42.	Prudence Road/landfill alignment between Broadway and East Loop Substation
43.	West side of Pantano Wash between Broadway and existing TEP transmission structures
44.	Utilizes existing TEP transmission structures between Pantano Wash and Segment 47
45.	Access located north of East Loop Substation
46.	Access located south of East Loop Substation
47.	Access located southeast of East Loop Substation

# Preliminary Study Area





Tucson Electric Power

P.O. Box 711  
ATTN: Irvington-East Loop  
Mail Stop RC131  
Tucson, AZ 85701-0711

First Class Mail  
Presorted  
**US Postage Paid**  
Tucson AZ  
Permit #21

## Irvington-East Loop Transmission Line



### Public Open House Meetings

**Tuesday, May 21 | 6-7:30 p.m.**  
Littletown Community Center  
6465 South Craycroft Road  
Tucson, AZ 85746

**Wednesday, May 22nd | 5:30-7 p.m.**  
Ott Family YMCA  
401 S. Prudence Road  
Tucson, AZ 85710

[tep.com/irvington-east-loop](http://tep.com/irvington-east-loop)

### Help us improve your electric service!

TEP wants to hear from you about potential routes for a planned transmission line that will help strengthen electric reliability for customers in Tucson. Read inside to learn how you can share your comments.