

Kino to DeMoss-Petrie 138 Kilovolt (kV)
Transmission Line Project



Community Working Group #6
Virtual Open House #4
(Virtual)

Presented:

Wednesday, June 23, 2021

Thursday, June 24, 2021

6-7 p.m.

- How to Submit Questions
- Introductions
- Vine Substation Update
- CEC Process Status
- Route Review
- TEP's Preferred Route
- Visual Simulations
- Schedule
- Next Steps
- More Information
- Comment Deadline
- Comment Submittal
- Questions

Kino to DeMoss-Petrie Transmission Line Project

Asking Questions and Submitting Comments



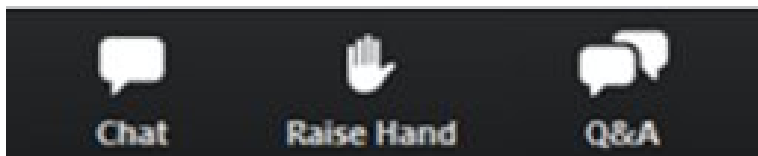
- This webinar is set up to bring attendees into the webinar in listen-only mode to minimize background noise
- TEP encourages attendees to ask questions. There will be a formal Q & A session at the end of the presentation
- Other ways to learn and comment. Please visit: <https://www.tep.com/kino-to-demoss-petrie/>
- Here you will find;
 - More information about the Project
 - Past meeting materials
 - Additional ways in which to provide comments

Kino to DeMoss-Petrie Transmission Line Project

Asking Questions and Submitting Comments



- Asking a WRITTEN question:
 - Click the “Q&A” button
 - Type your question
 - Select “send”
 - Moderator will facilitate answering questions at the end of the presentation



- Asking a VERBAL question:
 - Raise your hand using “Raise Hand” button or *9 from the phone
 - Moderator will call your name if submitted online or call out your last 4 digits of phone number
 - Unmute your microphone by clicking the unmute button (online) or by pressing *6 (phone) to ask your question



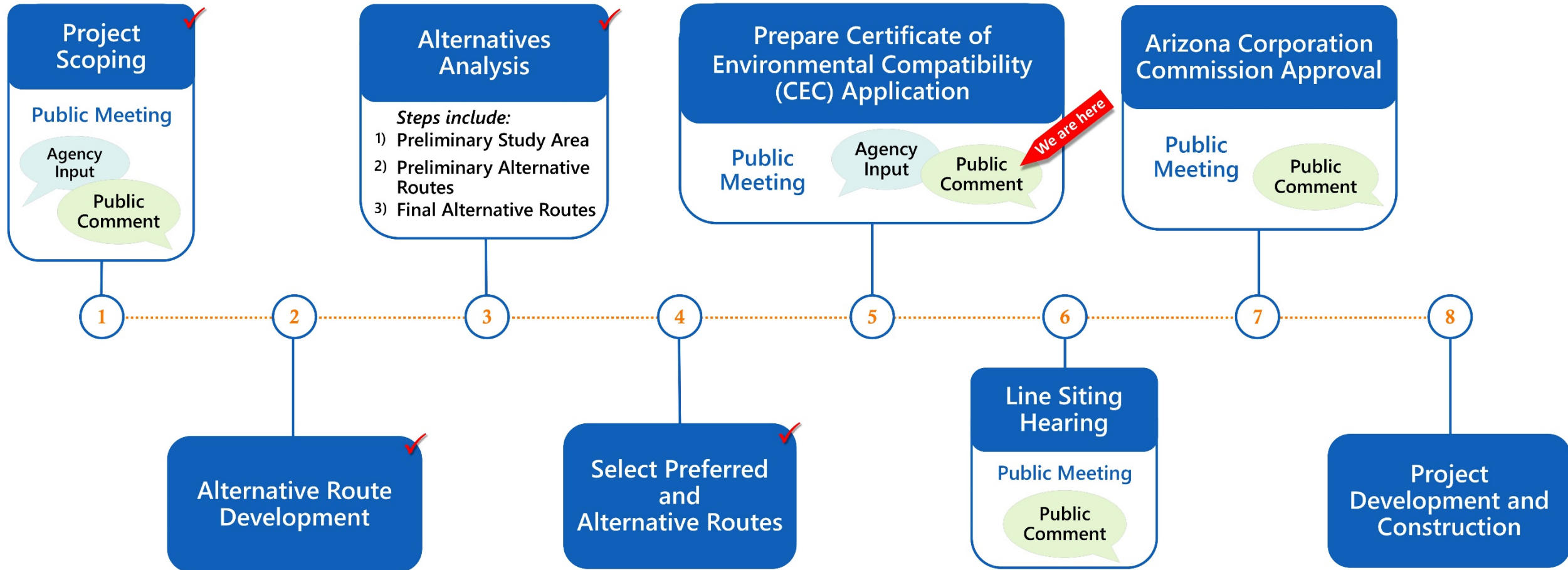


TEP Line Siting Team Introductions



Vine Substation Update

Kino to DeMoss-Petrie Transmission Line Project

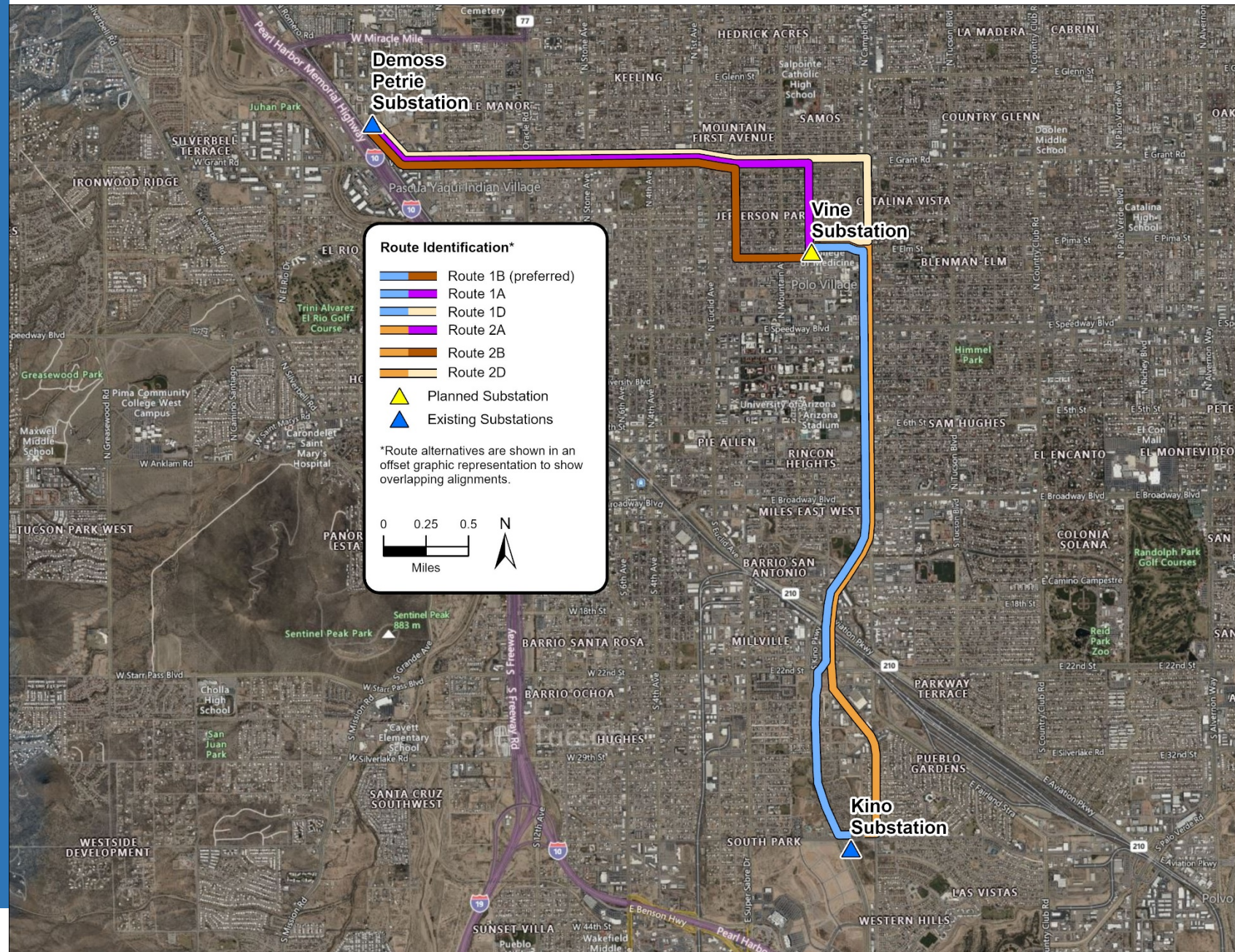




Routes for Consideration in Application

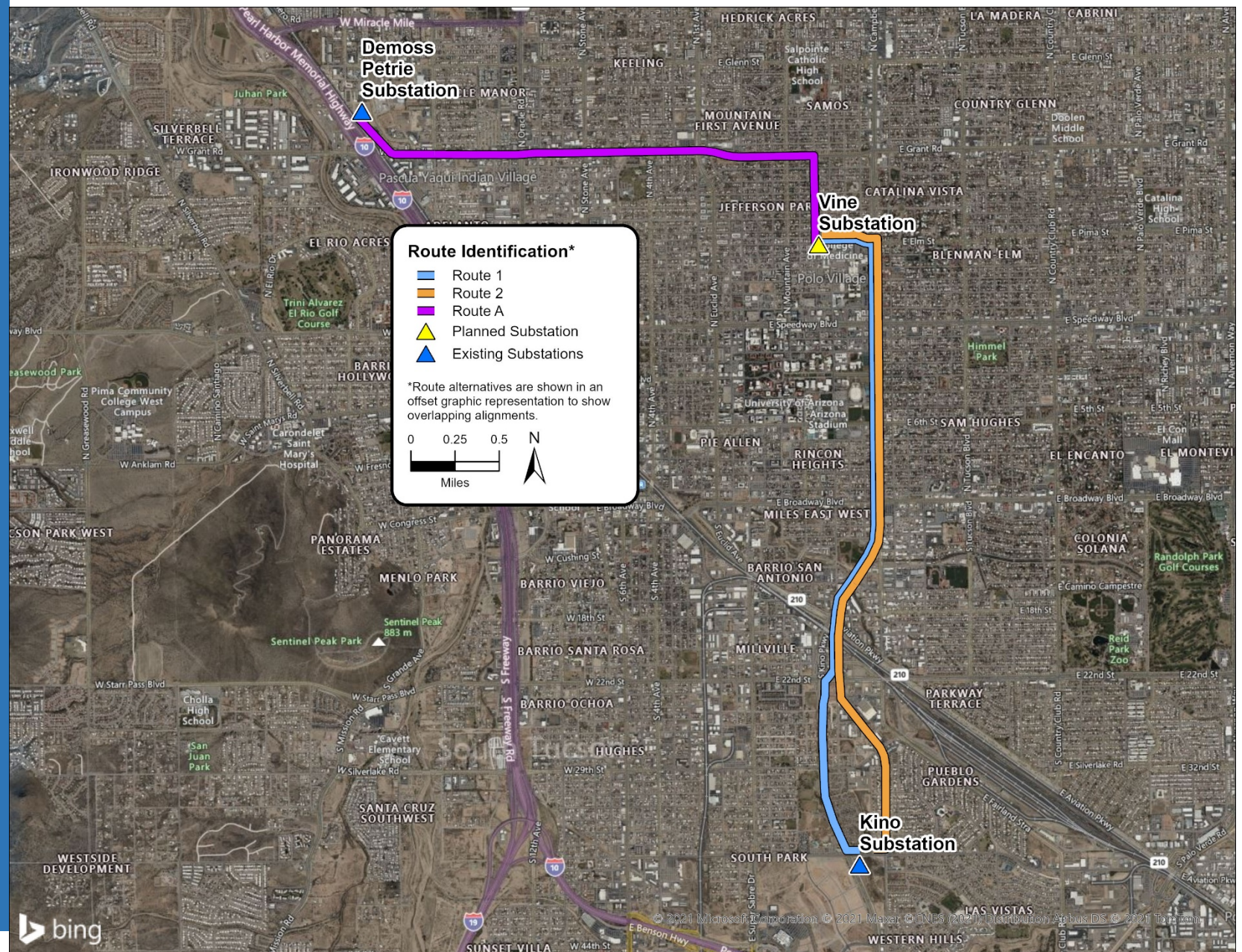
CEC Routes

Route Overview



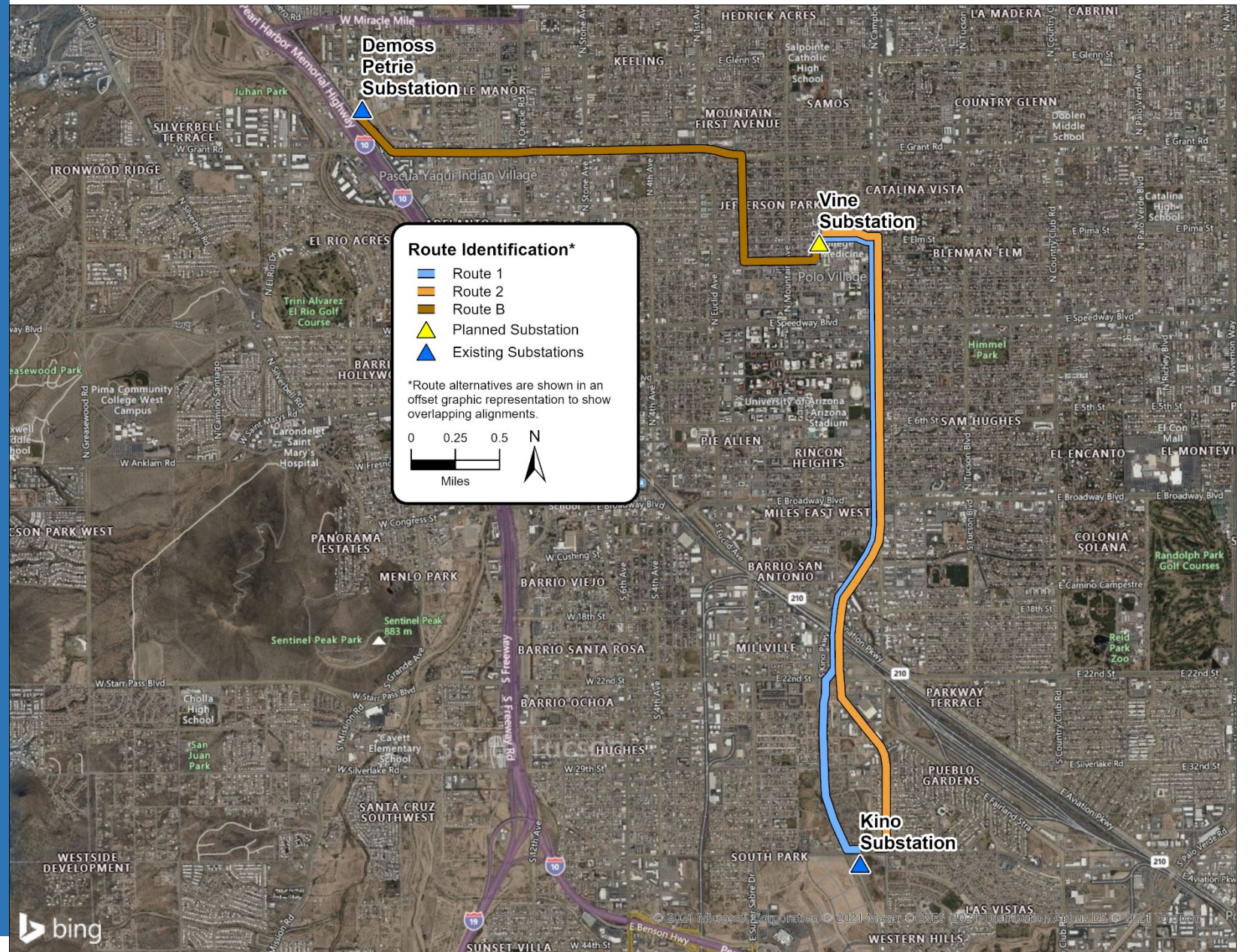
CEC Routes

Routes 1/2A



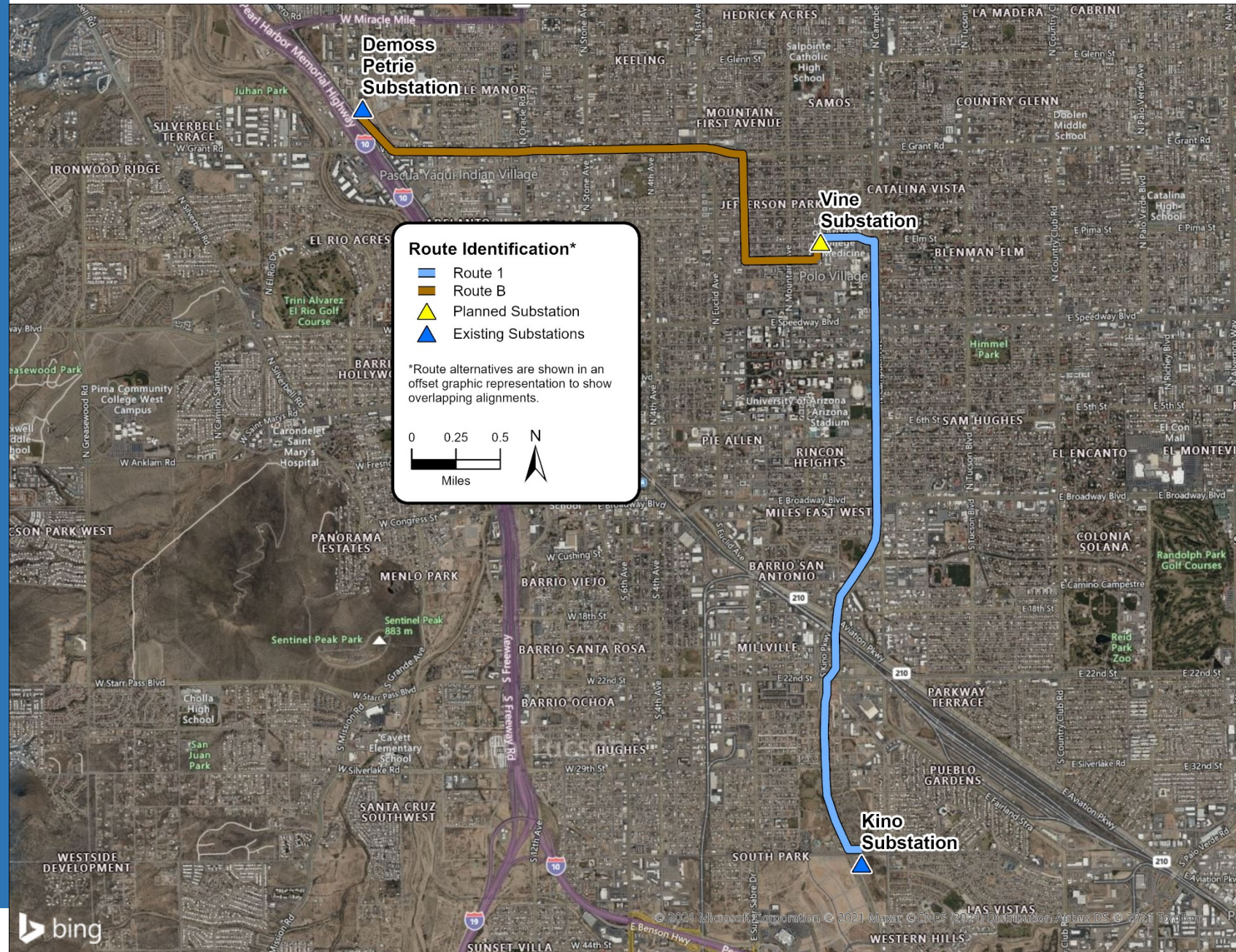
CEC Routes

Routes 1/2B



CEC Routes Preferred Route

Route 1B



CEC Routes

Preferred Route 1B

Preferred Route Reasoning

- Balances comments from neighborhoods

Route 1 over Route 2

- Within 150 feet of the Alternative, Alternative 1 impacts fewer residences than Alternative 2.
- South of where Alternative 1 & 2 merge, the houses do not face Alternative 1 and do face Alternative 2.
- Kino is an arterial road whereas South Campbell is a collector.
- Avoids the South Campbell Avenue Median Landscape, between 36th Street and Silverbell Road
- Fewer neighborhood impacts
- Supported by the Pueblo Gardens neighborhood

Route B over Routes A & D

- Uses the greatest amount of existing TEP utility corridors
- The least impact on the Jefferson Park Neighborhood
- Alternative B received the most “preferred” and the least “disliked” comments
- Alternative D would result in two transmission lines along Elm Road and received the most “disliked” comments.

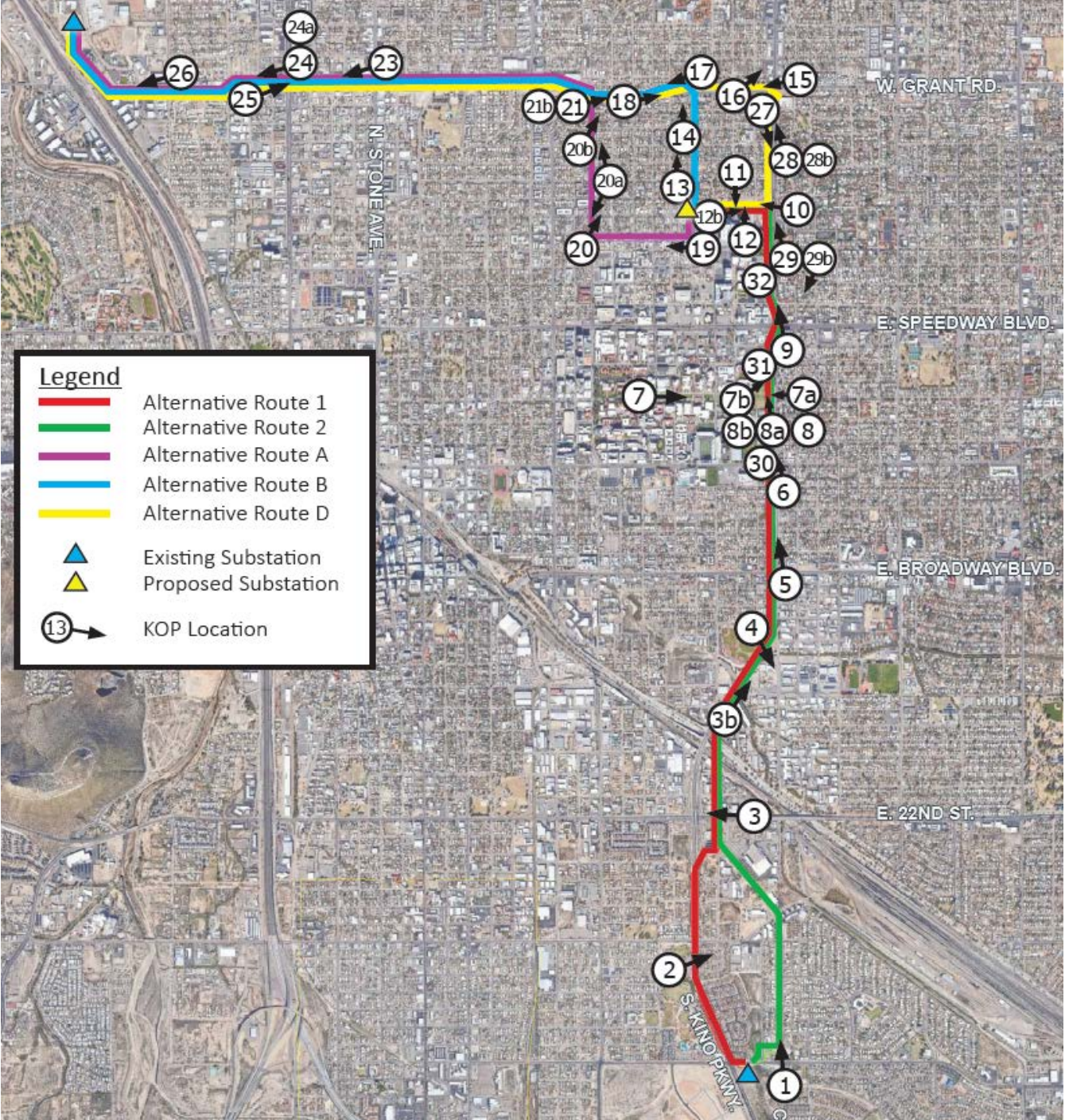




Visual Simulations

Visual Simulations

Overview



KOP #2, Route 1

Kino & Silverlake, looking north



KOP #2, Route 1 Current Condition



KOP #2, Route 1 Simulated Condition



KOP #3b, Routes 1&2

Kino & Silverlake, looking north



KOP #3b, Routes 1 & 2 Current Condition



KOP #3b, Routes 1 & 2 Simulated Condition



KOP #5, Routes 1 & 2

Kino & Broadway, looking north



KOP #5, Routes 1 & 2 Current Condition



KOP #5, Routes 1 & 2 Current Condition



Simulated Condition Showing Existing Distribution Removed within 5 Years (when possible) of Transmission Line Construction

KOP #7b, Routes 1 & 2

U of A mall, looking east / northeast



KOP #7b, Routes 1 & 2 Current Condition



KOP #7b, Routes 1 & 2 Simulated Condition



KOP #8, Routes 1 & 2

Campbell & University, looking north



KOP #8, Routes 1 & 2 Current Condition



KOP #8, Routes 1 & 2 Simulated Condition



Simulated Condition Showing Existing Distribution Removed within 5 Years (when possible) of Transmission Line Construction

KOP #10, Routes 1 & 2

Campbell & Elm, looking east



KOP #10, Routes 1 & 2 Current Condition

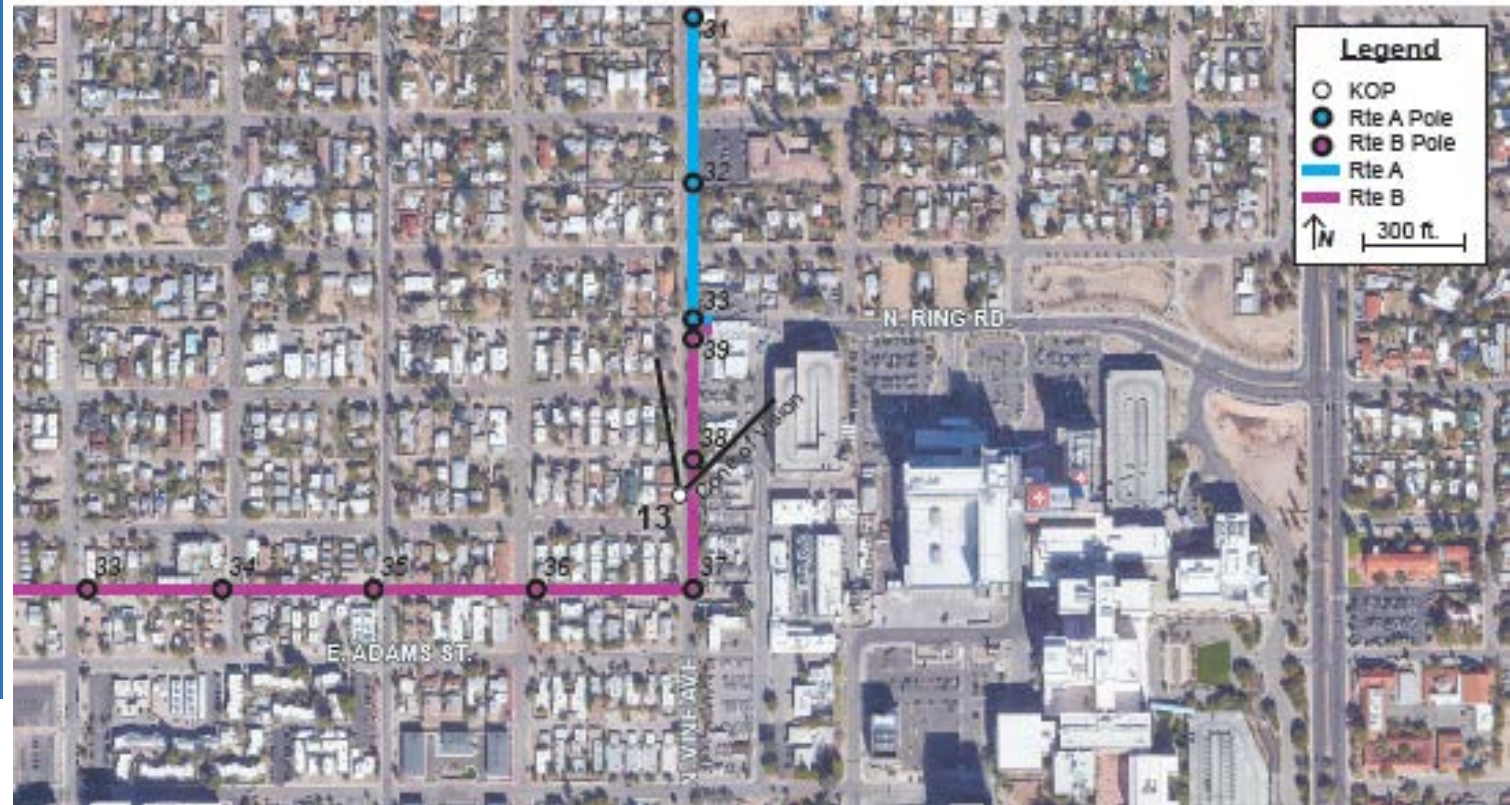
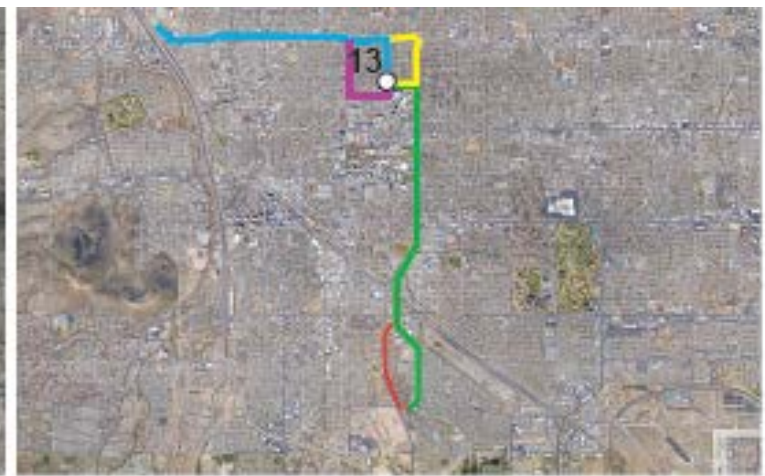


KOP #10, Routes 1 & 2 Simulated Condition



KOP #13, Route B

Vine, looking north



KOP #13, Route B Current Condition



KOP #13, Route B Simulated Condition



Simulated Condition Showing Existing Distribution Removed within 5 Years (when possible) of Transmission Line Construction

KOP #19, Route B

Vine & alleyway, looking west



KOP #19, Route B Current Condition



KOP #19, Route B Simulated Condition



Simulated Condition Showing Existing Distribution Removed within 5 Years (when possible) of Transmission Line Construction

KOP #20, Route B

Park & alleyway, looking north



KOP #20, Route B Current Condition



KOP #20, Route B Current Condition



KOP #20a, Route B Current Condition



KOP #20a, Route B Simulated Condition



KOP #20b, Route B

Park, looking north



KOP #20b, Route B Current Condition



KOP #20b, Route B Simulated Condition



KOP #23, Route A/B/D

Grant, looking West



KOP #23, Route A/B/D Current Condition



KOP #23, Route A/B/D Simulated Condition



KOP #25, Route A/B/D

Grant, looking east



KOP #25, Route A/B/D Current Condition



KOP #25, Route A/B/D Simulated Condition



All simulations can be found at:

- <https://www.tep.com/doc/Kino-DMP-Final-Visual-Simulation-Exhibit.pdf>

- Continue to collect comments & incorporate into application
- Complete CEC Application
- File CEC application – July 30 2021
- ACC LSC Hearing – September 13 -27 2021
- ACC Open Meeting – est. November 2021

Kino to DeMoss-Petrie Transmission Line Project



More Information

For more project information please visit the project webpage:

www.tep.com/kino-to-demoss-petrie/

Here, you can:

- Find a recorded version of all previous Open House presentation
- Find a PDF of this Virtual Open House presentation
- Find past newsletters, public meeting communications and Community Working Group (CWG) materials
- Read commonly asked questions & answers
- Read comments from the public and the CWG, and TEP's responses



Comment Deadline

There is no comment deadline – comments can be submitted up to and through the last day of the Line Siting hearing.

How to submit comments after the meeting:

- Via voicemail at 1-833-523-0887
- Via email at KINO2DMP@tep.com
- Via comment form at: <https://uns.wufoo.com/forms/z1eb494318gyjry/>
- By U.S. Mail to: P.O. Box 711, ATTN: Kino-DMP, Mail Stop RC131, Tucson, AZ 85701-0711



Questions?